

## South London and Maudsley NHS Foundation Trust

### Supplementary information

#### Mental health presentations at Kings College Hospital and St Thomas Hospital Emergency Departments

Those presenting at Kings and St Thomas' Emergency Departments, who are referred to the mental health liaison teams, typically fall into the following categories:

- Actual deliberate self-harm
- Intoxicated and suicidal
- Psychotic
- Hypomanic
- Depressed
- Depressed & Suicidal
- Anxious
- Requesting to see a Mental Health Professional
- Strange behaviour - often due to drug intoxicated

Self harm accounts for approximately 1/3 rd of all presentations.

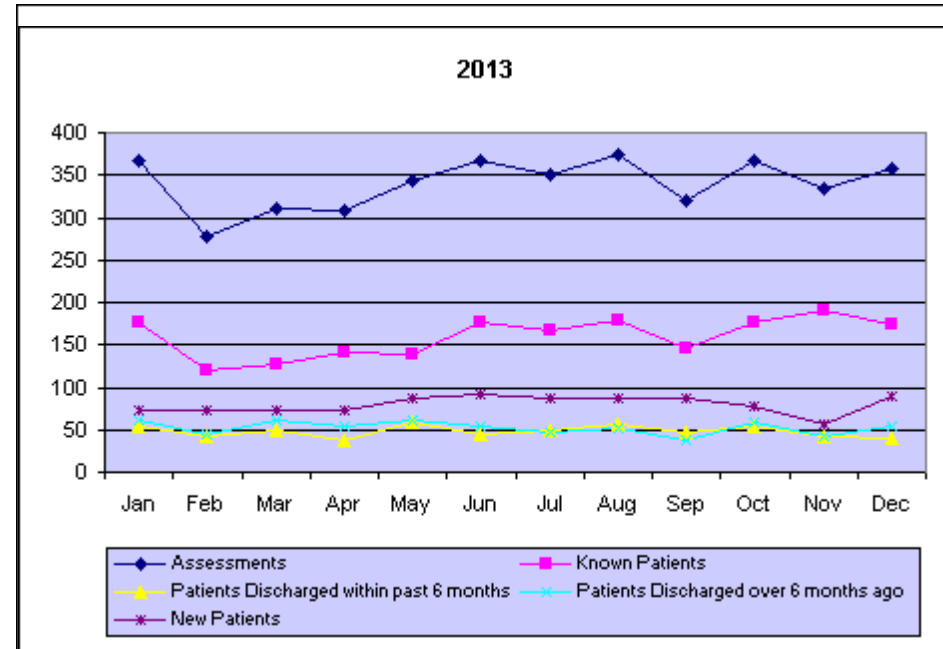
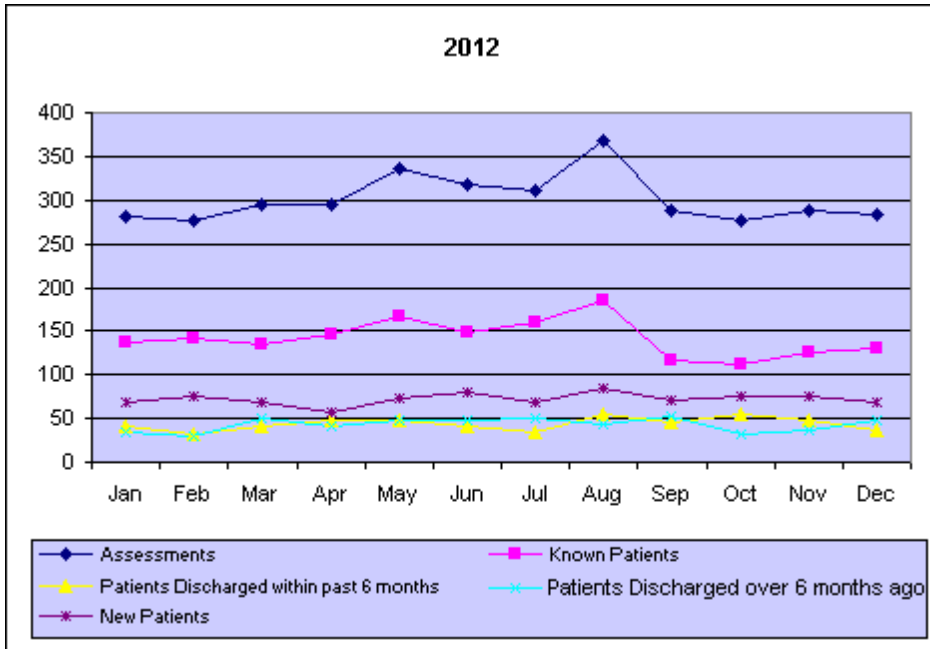
Of those presenting to the department, some are 'first presentation' patients (not known to SLaM) but from the local area, some are patients already under the care of SLaM and some are out of area patients. The latter group is particularly represented in those presenting at St Thomas' ED due to its proximity to major transport hubs and London's West End.

SLaM have not, to date, kept detailed records of the numbers of different classifications of presentations to the EDs but are now in the process of doing so as part of current initiatives, particularly at Kings, aimed at understanding the increased activity and identifying alternative pathways.

The following tables describe mental health activity over 2 years in the two emergency departments and illustrates the breakdown between presentations of people currently or recently know to mental health services and new presentations.

Steve Davidson Service Director 23<sup>rd</sup> January 2014

## Kings College Hospital Mental Health Liaison Team 2012 - 2013



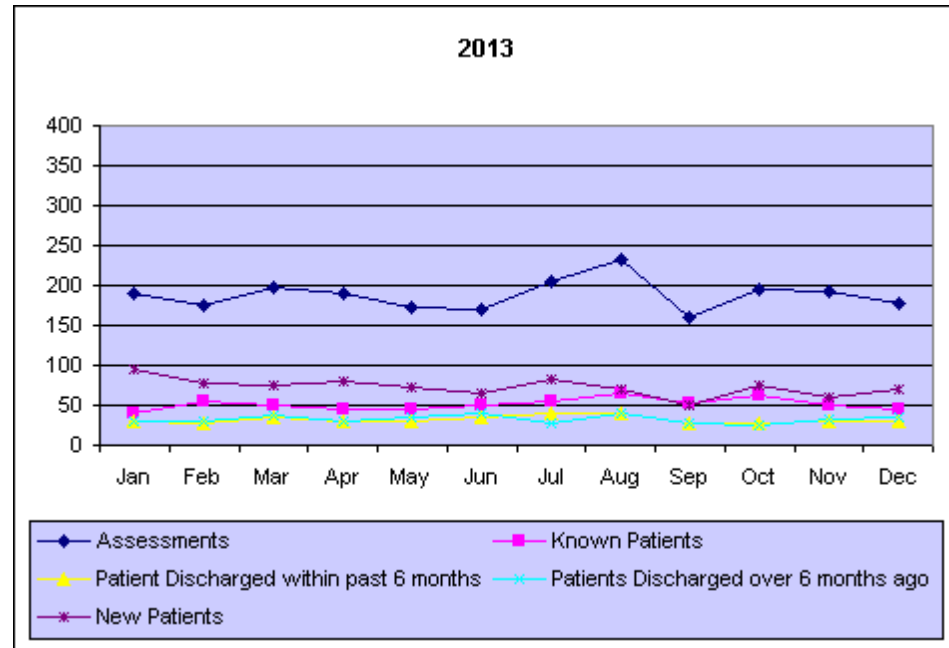
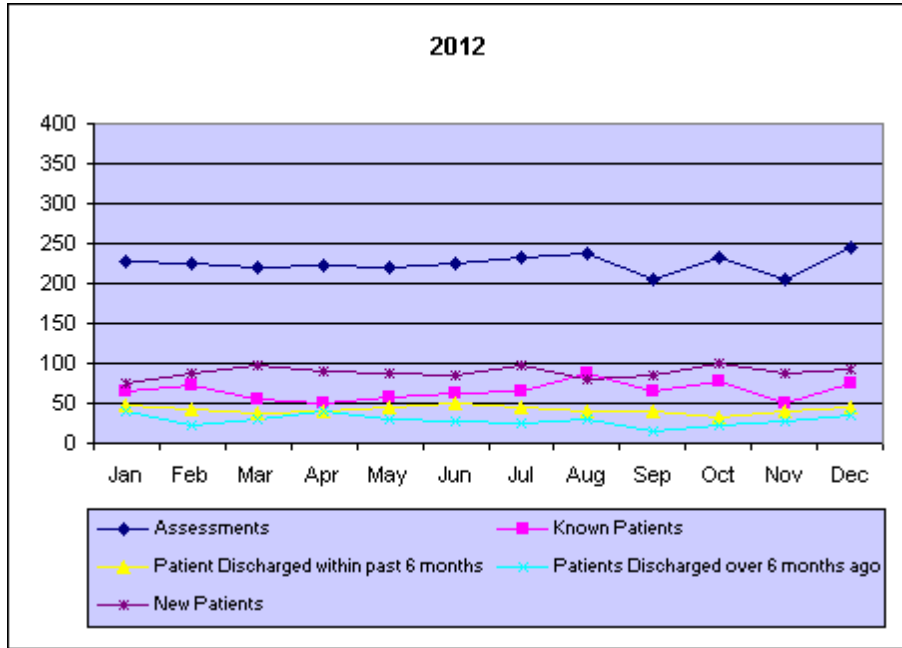
### 2012

	Jan	Feb	Mar	Apr	May	Jun	Jul	Aug	Sep	Oct	Nov	Dec
<b>Assessments</b>	282	277	295	294	336	318	312	369	287	276	287	284
<b>Known Patients</b>	138	141	136	147	168	149	159	185	117	113	126	131
<b>Patients Discharged within past 6 months</b>	42	31	41	47	47	41	34	55	46	55	49	37
<b>Patients Discharged over 6 months ago</b>	34	30	50	42	47	48	50	44	52	33	37	48
<b>New Patients</b>	68	75	68	58	74	80	69	85	72	75	75	68

### 2013

	Jan	Feb	Mar	Apr	May	Jun	Jul	Aug	Sep	Oct	Nov	Dec
<b>Assessments</b>	366	277	311	308	344	367	351	374	319	368	333	357
<b>Known Patients</b>	176	119	127	142	138	176	168	180	147	177	190	175
<b>Patients Discharged within past 6 months</b>	55	42	50	37	58	44	49	56	48	55	43	39
<b>Patients Discharged over 6 months ago</b>	62	44	62	55	62	55	46	52	38	59	43	54
<b>New Patients</b>	73	72	72	74	86	92	88	86	86	77	57	89

## St Thomas' Hospital Mental Health Liaison Team 2012 - 2013



### 2012

	Jan	Feb	Mar	Apr	May	Jun	Jul	Aug	Sep	Oct	Nov	Dec
<b>Assessments</b>	227	225	220	222	220	225	232	238	205	232	205	245
<b>Known Patients</b>	66	72	55	51	57	63	65	88	64	77	49	74
<b>Patient Discharged within past 6 months</b>	48	43	37	40	44	50	44	40	39	32	41	44
<b>Patients Discharged over 6 months ago</b>	39	22	31	40	31	27	26	31	16	23	27	34
<b>New Patients</b>	74	88	97	91	88	85	97	79	86	100	88	93

### 2013

	Jan	Feb	Mar	Apr	May	Jun	Jul	Aug	Sep	Oct	Nov	Dec
<b>Assessments</b>	189	174	198	189	172	170	205	232	161	195	192	178
<b>Known Patients</b>	39	55	50	45	45	50	54	64	53	63	50	44
<b>Patient Discharged within past 6 months</b>	30	28	34	31	31	35	41	39	27	27	30	31
<b>Patients Discharged over 6 months ago</b>	29	31	38	31	35	40	27	39	27	26	32	34
<b>New Patients</b>	94	77	75	80	73	64	83	69	50	76	60	69

